

SMT Cleaning Machine



**Electric stencil
cleaning machine**



**Pneumatic stencil
cleaning machine**



**Wave oven fixture
cleaning machine**



Offline PCBA cleaning machine



Nozzle cleaning machine



Inline PCBA cleaning machine



Squeegee cleaning machine

Mis-print PCB cleaning machine, Squeegee cleaning machine, reflow over cleaning machine...

Other cleaning Machine



**Mobilephone
camera module
cleaning machine**



IC Tray auto cleaning machine

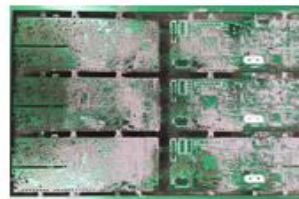
Electric Stencil Cleaning Machine

Model : AA-SCE-800

- Clean solder paste stencil;
- Clean red glue stencil, Resin mask, Copper mask;
- Clean misprinted PCB;
- Clean Big size PCBA.
- Clean squeegee



Solder paste and red glue stencil



Misprinted PCB



Squeegees



PCBA

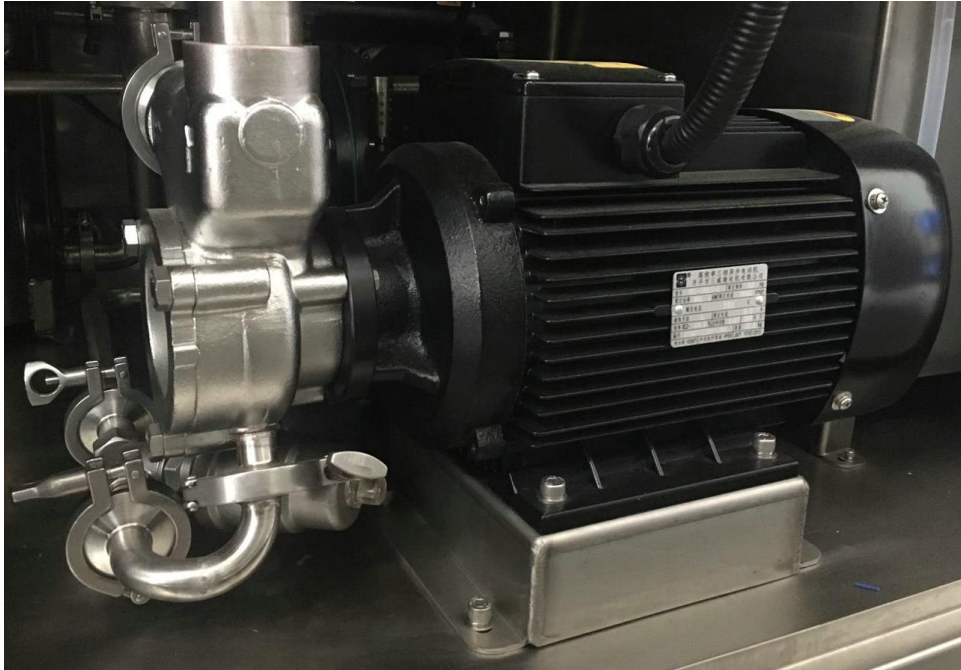
AA-SCE-800 description The most stable cleaning mechanism



Stencil moves back and forth while 4 spray rods and 4 air knives are fixed. No soft liquid hose and air hose bend and frequently wear down to keep machine mechanism stable and reliable.

AA-SCE-800 **description**

Electric pump and air pump



High quality Nanfang electric pump



Ingersoll Rand air pump for liquid and water automatically add and discharge

AA-SCE-800 description Filters and liquid tanks



Clean and rinse system are equipped with real-time filtering function, no solder paste ball goes back to stencil, mis-print PCB and PCBA again together with liquids and water

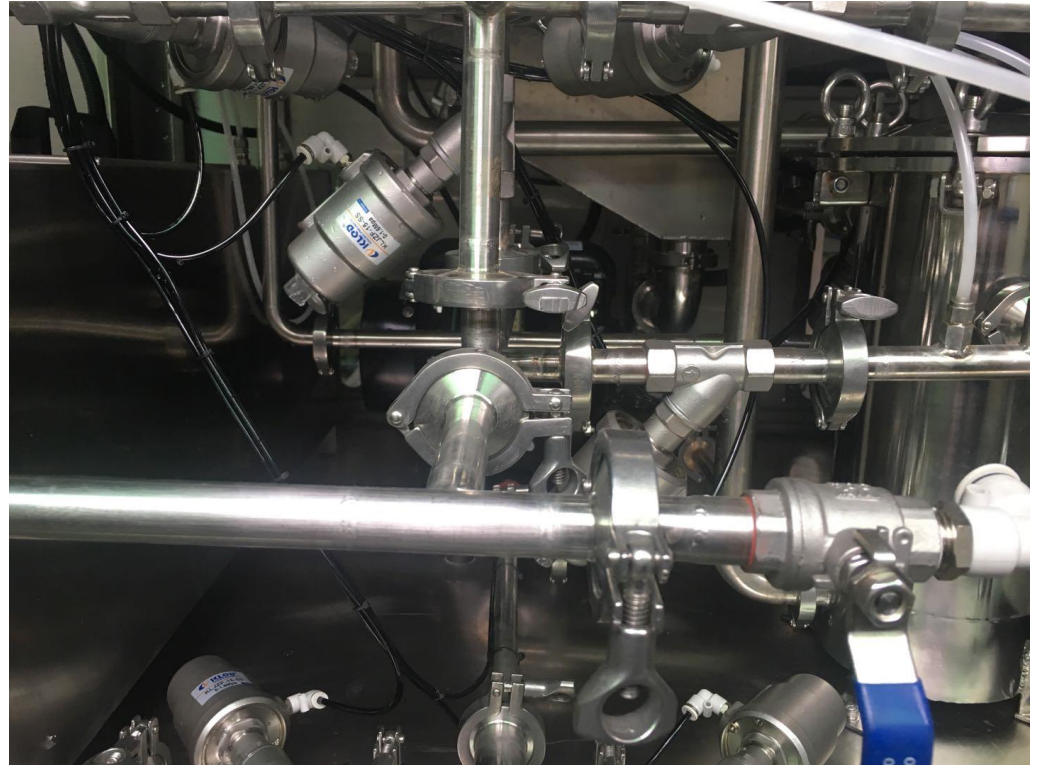


Clean liquid tank and rinse water tank are equipped with heat and temperature control function and 4-level liquid switches to protect pumps and heaters

AA-SCE-800 description Air blower and pipe system



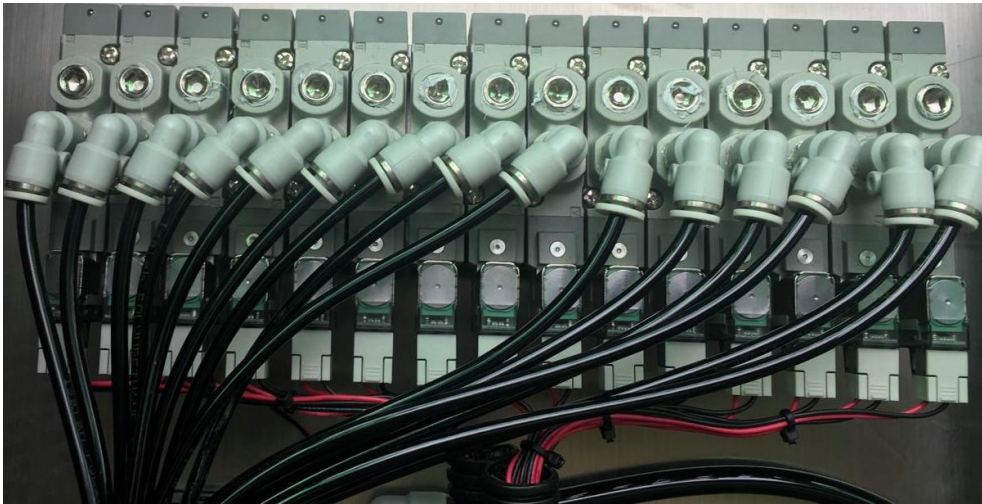
4KW air blower, right for frequently start and shut off; high air rate can greatly reduce stencil dry time



Total SUS304 liquid pipes, angle valves, no plastic hose, no need to worry about liquid pressure on pipe, no liquid leakage and keep long life span.

AA-SCE-800 description

air control system

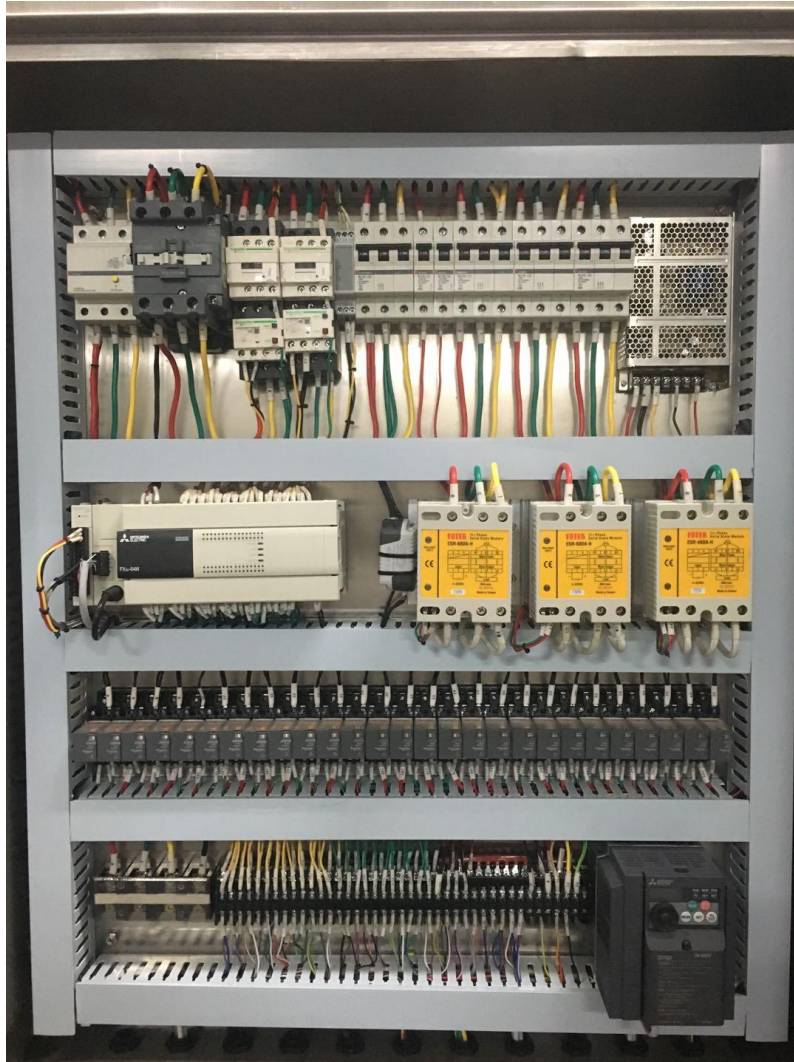


Each machine action are conducted by solenoid valves and relays.



Each separated air lines are singed .

AA-SCE-800 description



Famous electric parts and
reliable control system

Mitsui: PLC, TP, Inverter,
Module, Breaker, Leakage
protection switch;

Schneider: Relay, AC
Contactor, Thermal Relay;

Omron: Switching mode
power supply, Sensor ;

CKD solenoid valves; Fotek
SSR; IDEC keys and Patlite
indicator

AA-SCE-800 Machine Features

- Aqueous cleaning liquid, clean +rinse+dry process.
- Not only stencil, but also copper stencil, mis-printed PCB, squeegees.
- The best mechanism design--stencil move back and forth while spray rods and air knives on the two sides of stencil fixed.-- make the machine stable and very few frictions.
- no soft liquid hose or hot air hose broken frequently because of high liquid and air pressure and hose frictions.
- Real time filter system, make liquid and water can be recirculated used, save liquid and water, no solder balls come back to stencil surface again after clean and rinse off. Especially for precise stencil' clean.
- 4 spray rods with spray nozzles on it, cover all the surface of stencil.
- 4 air knives with high volume and high pressure air blower, make it dry the stencil quickly.
- SUS304 stainless steel structure, all machine parts which connected liquid, water or hot air are SUS304 material. solid and stable.

AA-SCE-800 FEATURES

- One key easy operation, all cleaning ,rinse and dry process are completed in one cycle.
- Visible window on cleaning chamber, all process are visible.
- Compressed- air blow out remain liquid in pipes after cleaning process, save up to 50% liquid.
- PLC control, TP English interface, 20 sets of programmes can be set and edited.
- Equipped with air pump liquid/water add and drained automatically according to requirement.
- world wide famous brand, high quality electric parts, pneumatic parts, reliable and stable.
- High cleaning efficiency;
- Low liquid consumption

AA-SCE-800 Specifications

No.	Item	Specification
1	Stencil size	750mm(L) × 750mm(W) × 40mm(H) as max
2	Capacity of tank	60L x2 pcs. (liquid tank and water tank)
3	Clean time	3~5 minutes
4	Rinse time	1~2 minutes
5	dry time	3~6 minutes
6	Clean liquid	aqueous cleaning liquid for cleaning
7	rinse liquid	DI water or DM water
8	clean/rinse method	high pressure liquid/water spray clean and rinse
9	dry method	hot air blow dry
10	Liquid or water heat temp	room temperature to 60oC
11	Dry air heat temp	room temperature to 90oC
12	Clean heater power	9KW

AA-SCE-800 Specifications

No.	Item	Specification
13	rinse heater power	9KW
14	Dry heater	6KW
15	Filter grade	1µm for cleaning, 1 µm for DI water
16	Electric pump	4HP stainless steel I pump
17	Hot air blower	5.5 HP
18	Exhaust air vent	Φ120mm
19	Power supply	380VAC, 3 Phase, 50HZ , 33KW(13kw when machine is working)
20	Air supply	0.5~0.7Mpa
21	Weight	720KG
22	Dimension	1300mm(L) × 1400mm(W) × 1950mm(H)

AA-SCE-800 flow chart

